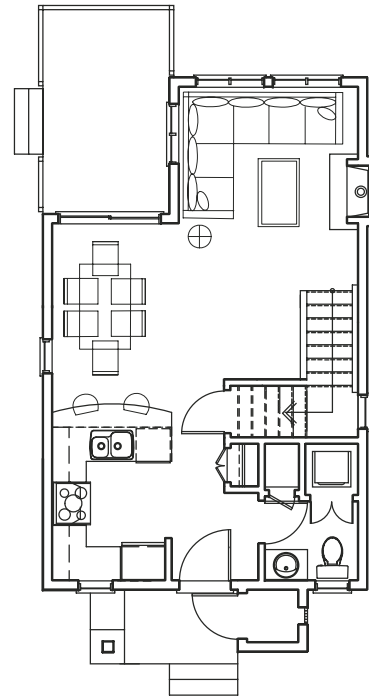




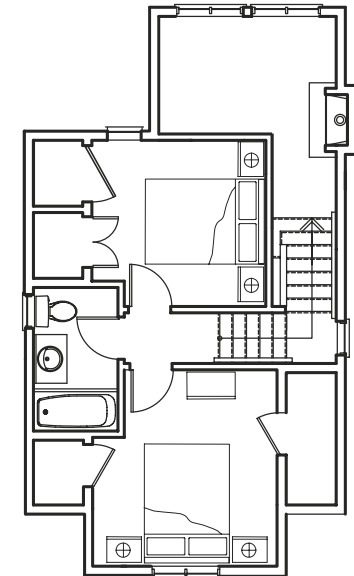
## EL TOLEDO 2

2 bedrooms, 1½ bathrooms  
sleeps up to six people  
867 square feet

Retreat, relax and renew in El Toledo 2, the lakeside cottage you've always dreamed of but never found until now. This cottage home reflects the full spectrum of exclusive resort vacationing from open living spaces and quality finishing touches to the luxury of private beaches and other amenities designed with your high standards in mind. Enter El Toledo 2 and step onto elegant laminate flooring that flows through to the dining room and living room. Sit at the breakfast bar for a quick bite or prepare a savoury meal in your gourmet kitchen. Cozy up in front of the fireplace in the living room and experience the subtle merging of nature and style with vaulted ceilings and large picture windows. One full bathroom upstairs and a powder room downstairs with stylish hand-set tiles ensures no one is left waiting to clean up after a fun filled day, while ample storage on the second floor allows you to safely stow all your vacation gear. The convenient stacker washer and dryer off the powder room rounds off the many features of El Toledo 2 that will make you feel right at home.



**MAIN FLOOR**



**SECOND FLOOR**